

PNK-CNC



abm
Grinding Technologies



Advanced grinding, all-in one setup...

PNK-CNC

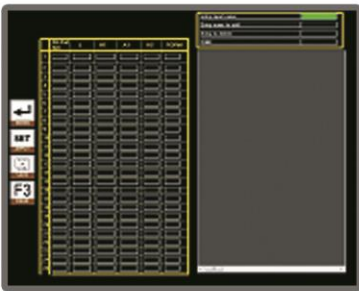
CNC BAND SAW GRINDER



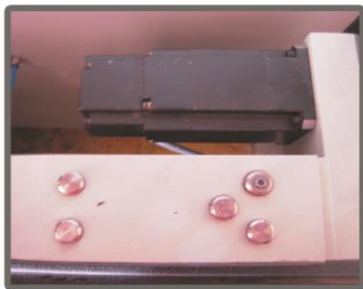
The flexible, hi-tech solution

High technology to lead the ever-changing world of tool processing.

PNK-CNC is designed to grind all types of band saw blades used in metal cutting



Free Programming Feature
(for metal cutting band saw blades)



Indexing by servo motor.



Wheel Dressing Unit



Fast and precise grinding



Rigid construction of grinding unit

A versatile response to meet all demands...

General Features

- 3 axes Servo motor controlled.
- Operating screen in any language. (please state the required language in order)
- PC controlled by Windows® operating system.
- Downloading a program through internet if demanded.
- 17" LCD screen control panel.
- Language selection on the control panel.
- Tooth form selection from the control panel.
- Grinding all common tooth types.
- Possibility of saving grinding programs of the blades ground.
- Following the hook angle from the control panel.
- Indexing by servo motor.
- Absolute tooth pitch accuracy.
- Variable grinding speed.
- Variable grinding wheel rotation speed.
- Grinding head riding on linear rails.
- Optionally wet or dry grinding.
- Grinding by CBN wheel or vitrified type wheel.
- Water emulsion/oil coolant [for CBN grinding].
- Central lubrication.
- Pneumatic lift-off band saw grinding.
- Integrated light unit.
- Separation of electronic and grinding areas.
- Included band saw carrier legs.
- Motor controlled band saw vertical movement.
- Steady mechanic blade clamp.
- Enclosed cabin for operator safety.
- Ergonomic machine construction for ease of loading and unloading.
- Simple controls for ease of use.
- Rigid machine construction.
- Production conformed with CE standards.

At ABM, we develop our machines, our own electronic systems and application software and manufacture all main mechanical components. Finally, we assemble and test the final product to global machine standards. Whichever ABM machine you choose for your grinding, you will know that it is built to meet the all market demands.

Tooth Forms

PNK-CNC guarantees a flawless, fast and precise grinding of KV, NU, NV, PV, PU and SB tooth forms with its state-of-the-art grinding technology.



KV



NU



NV



PV



PU



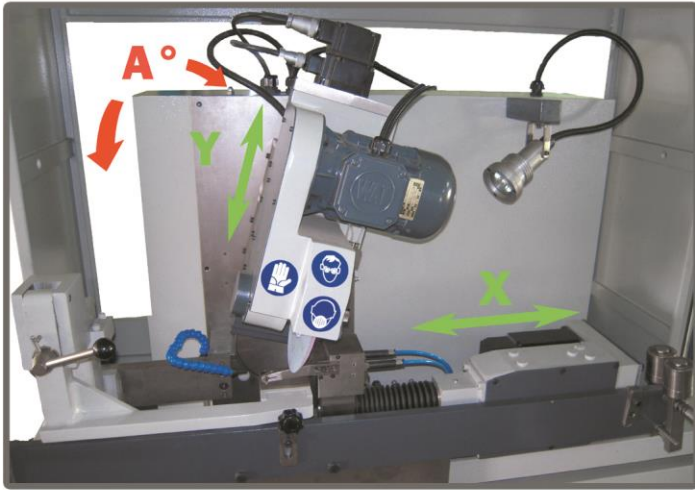
SB

The true innovation is the product of experience and dynamics...

Technical Specifications

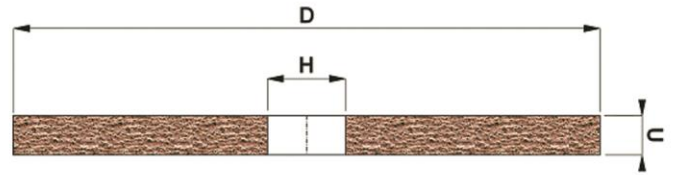
• Band saw width	50-250mm
• Band saw length	Max. 14m.
• Blade thickness	0.6-3.2mm
• Tooth pitch	Max. 60mm
• Tooth depth	Max. 30mm
• Tooth forms	NU,NV,KV,PV,PU,VP,SB
• Hook angle	(-10°) (+35°)
• Feed rate (speed controlled)	10 / 90 teeth/min.
• Grinding wheel dimensions	D: Ø300mm d:Ø32mm
• Grinding wheel thickness	5-13mm (depending on tooth pitch)
• CBN Grinding wheel dimensions	D: Ø200mm d:Ø20mm
• CBN Grinding wheel thickness	1.6-13mm (depending on tooth pitch)
• Grinding wheel rotation (speed controlled)	1400-5500 r.p.m.
• Grinding wheel motor power	0,75kW
• Coolant type	Water emulsion(vitrified wheel) / Oil (CBN wheel)
• Coolant motor capacity	80 lt/min.
• Coolant pressure	10 Bars.
• Coolant container capacity	90lt.
• Motor quantity	6
• Connected load	3.0kW
• Voltage	380V, 3Ph, 50-60Hz
• Net/gross weight	800/850kg
• Dimensions	1550*2000*2000mm (saw blade unmounted)

Axes of Machine



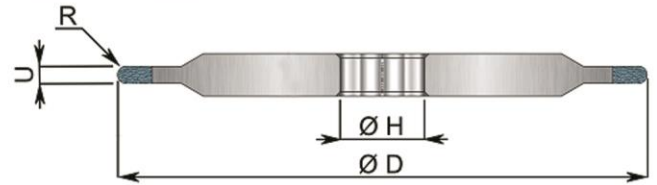
Grinding Wheels

Vitrified Wheels



D: Ø300mm
H: Ø32mm
u: 5-13mm

CBN Wheels



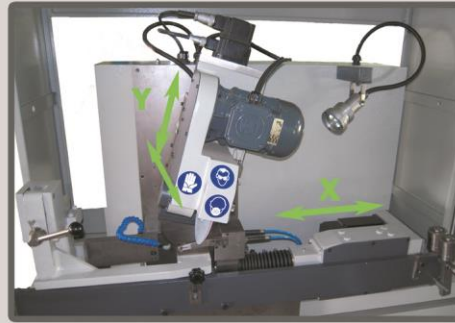
D: Ø200mm
H: Ø32mm
u: 1,6-13mm
R: 0,8mm

High Accuracy / High Productivity

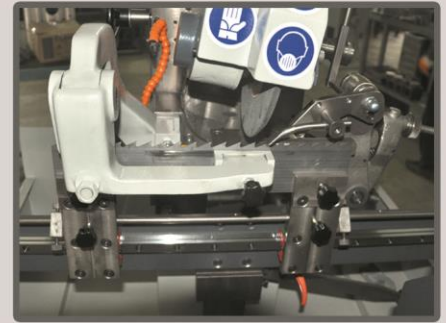
Optionals



Automatic Lubrication Unit
With control from LCD panel



Optional Chamfering Axis



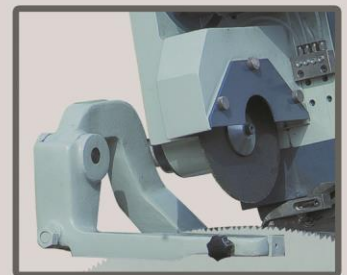
Frame Saw Blade Attachment



Mechanical Air Filter Unit



Coiler/Uncoiler unit for
saw blade production



HSS Circular Saw Blade
Grinding Attachment